

Regulatory VATCS

POSTED SPEED SERIES - USA

Independently-proven vehicle activated LED traffic calming sign solution for managing excessive speed and reducing traffic fatalities in both rural and urban roadway applications*

** refer to TRL548 report*



VATCS are the only traffic calming display technology that has been federally field tested* on a large scale to prove long term effectiveness, with driver respect of the technology being maintained over a 5 year period.



VATCS displays have been selected to be nationally tested by FHWA across 8 states and have become the new industry standard for display based traffic calming applications in North America.

All Dorman Varitext regulatory posted speed limit VATCS units employ microwave Doppler radar to detect vehicle approach speeds and in line with the core MUTCD philosophy of a consistent road speed management strategy, utilize R2-1 speed limit diagrams that are already recognized in the MUTCD. Targeted drivers are not informed what speed they are travelling, rather they are advised of the regulatory posted speed limit with the request to "SLOW DOWN" further enhanced by dynamic flashing pairs of horizontal beacons. The posted speed limit VATCS series are used in tandem with existing static regulatory signage being deployed downstream as a targeted reminder and are not to be used as a replacement for the static signage or a repeater.



SPONSORED BY
MICROSOFT

Unique technology

Independently proven as long term effective

4mph average speed reduction maintained over 5 year period

1/3rd accident rate reduction attained over 5 year period

MUTCD Compliant

Based on core MUTCD philosophy of consistent driver information.

High intensity ITE color tested LED display, auto dimming

FCC compliant technology

Flexibility to adjust trigger speed to specific applications

Optional upgrade to remote internet access via Dorman Gateway

Flashing beacons provide dynamic element to sign face

Plug and play install (all cables, brackets provided)

Wireless Speed Data logging

Solar and AC 110V dual power source as standard

Robust Vandal resistant NEMA Type 3S rated housing

18" and 24" R2-1 model sizes available

Optional Single or Dual Speed Limit Display

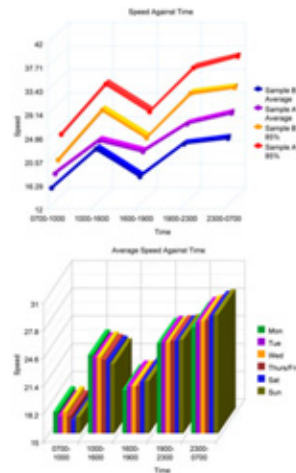
VAMP® Automated Scheduling Software for School Zones



All VATCS come as standard with NEMA Type 6P modular plug and play install kit allowing simple and secure band mounted mechanical install and electrical connection. No special tools required for set up.

Regulatory VATCS

POSTED SPEED SERIES - USA



SPECIFICATIONS

Model Reference	Regulatory VATCS - Posted Speed Series VATCSR2-1,X,Y/SD/L/DL/PT (Single or Dual Speed Diagram)
Display Technology	ITE color tested high intensity LED display, Optical performance in compliance with FHWA MUTCD and TR2136C, Auto Luminosity control to suit ambient light conditions.
Display Format	Color inverted MUTCD speed limit diagram,R2-1 in 24" and 18" size options, dual speed limits combined together in one sign or single limit displays, complete with matching Slow Down Message and amber flashing beacon pairs. Slow Down text height 3" and 4" to suit both 18" and 24" model sizes respectively. Beacon size 4" and 5" diameter respectively.
Vehicle Detection	FCC compliant K band radar microwave vehicle detector integrated into the sign, factory preset range of 600feet/190Metres, Speed range of 5 to 150mph (8 to 240kmh). 12 degree beam accuracy +/-1 unit of measure. Simple set up.
Model Dimensions	24" Size 60" (1510mm) high x 35"(875mm) wide x 6" (160mm) deep. 18" Size 46" (1150mm) high x 24"(610mm) wide x 6" (160mm) deep.
Model Weights	24" Size 90Lbs (plus batteries in case of solar) 18" Size 60Lbs (plus batteries in case of solar)
Power Supply	Display is dual Solar DC and AC 110V compatible as standard. In the case of Solar power installs SP80S4 solar kits should be ordered for each sign comprising 80W panel, side of pole mount and 4 x 12V 20amp/hr battery reservoir which are mounted internal to sign. Important for 24/7/365 solar operation, solar panel must be facing due south and have clear unobstructed view of sky with no shadowing. Power consumption max. 100W.
Data logging and Analysis Software	DVNA's unique data logging software interfaces to the sign via Bluetooth™ connection with hand held PDA. Software records date, time, and speed of oncoming vehicles. Information can be remotely downloaded into Excel for analysis. Standard memory provides for 11 Million vehicle data entries.
Enclosure	Purpose fabricated lightweight vandal resistant NEMA Type 3S ingress rated enclosure
Finish	Matt Black front face Aircraft Grey rear powder coat finish or color to suit, 60 micron min thickness.
Window	¼" (5mm) anti reflective Polycarbonate
Operating Temp Range	-30 to 165°F, 95% non condensing
Mechanical Interface	Sign will be supplied equipped with 4 No SX0220 channel banding interface brackets as standard to allow ¾" band mounting to a variety of support posts. Solar Panel equipment is supplied with side pole mount to allow ¾" banding. The Sign fix channel runs full width of sign to allow offset mounting if required.
Electrical Interface	Cable kits are supplied to facilitate plug and play connection to solar panel and sign. Sign also equipped on rear with naked AC plug and socket Type 6P connection and separate ¾" knock out for conduit cable entry. Dust Caps are supplied to protect any unused sockets. Internal power connections are screw terminal.

OPERATION

The VATCS sign is designed to operate in both ACTIVE and STEALTH Mode.

STEALTH MODE is used to allow client to attain a baseline of road speed from the VATCS without the VATCS displaying any visual warning to the approaching traffic.

Once collected this base data can be compared against existing historic data and then importantly used to evaluate performance of the sign in ACTIVE MODE.

Once in ACTIVE MODE the sign upon detecting an approach speed above the pre-configured trigger speed will cause the warning display to be illuminated for 3.5 seconds giving driver sufficient time to adjust behavior appropriately. When vehicles are travelling below the trigger speed the sign will remain entirely blank; importantly the warning message is only targeted at offending vehicles. Trigger speeds are selected from a preprogrammed table and it is normal practice for posted speed limit sign applications to set this to the posted speed plus 10% plus 2 MPH (eg. In a posted 30 MPH zone, the sign would be set to trigger at 35 MPH).

Optional VAMP® Desktop Scheduling Software allows the operator to automate sign operation in dual speed limit VATCS models. Schedules are uploaded to the signs via PDA using Bluetooth to reflect regulatory conditions. A common example might be a school zone application where speed limits decrease during school peak operation hours.

All VATCS are supplied with a comprehensive operation manual which contains a guide to installation best practices. It is recommended that these practices are followed to ensure optimal performance and results.

**DORMAN
VARITEXT**
DVNA Head Office:
173 Main Street, Bath,
Ontario K0H 1G0
Canada

email:
enquiry@dormanvaritext.com
website:
www.dormanvaritext.com

U.S.A. Regulatory Posted Speed Limit VATCS

Uniplan Product Coding Vehicle Activated Traffic Calming Signs



SINGLE POSTED SPEED

SPEED LIMIT 20

Model:
VATCSR2-1,20/SD/L/DL/PT

Uniplan Part Number:
RVR2-1C-SLDPCBP (24" x 30" Size)
RVR2-1C-SLDPCAP (18" x 24" Size)

SPEED LIMIT 25

Model:
VATCSR2-1,25/SD/L/DL/PT

Uniplan Part Number:
RVR2-1D-SLDPCBP (24" x 30" Size)
RVR2-1D-SLDPCAP (18" x 24" Size)

SPEED LIMIT 30

Model:
VATCSR2-1,30/SD/L/DL/PT

Uniplan Part Number:
RVR2-1E-SLDPCBP (24" x 30" Size)
RVR2-1E-SLDPCAP (18" x 24" Size)

SPEED LIMIT 35

Model:
VATCSR2-1,35/SD/L/DL/PT

Uniplan Part Number:
RVR2-1F-SLDPCBP (24" x 30" Size)
RVR2-1F-SLDPCAP (18" x 24" Size)

SPEED LIMIT 40

Model:
VATCSR2-1,40/SD/L/DL/PT

Uniplan Part Number:
RVR2-1G-SLDPCBP (24" x 30" Size)
RVR2-1G-SLDPCAP (18" x 24" Size)

DUAL POSTED SPEED

SPEED LIMIT 20

SPEED LIMIT 25

Model:
VATCSR2-1,20,25/SD/L/DL/PT

Uniplan Part Number:
RVR2-1CDSLDPCCBP (24" x 30" Size)
RVR2-1CDSLDPCCAP (18" x 24" Size)

SPEED LIMIT 20

SPEED LIMIT 30

Model:
VATCSR2-1,20,30/SD/L/DL/PT

Uniplan Part Number:
RVR2-1CESLDPCCBP (24" x 30" Size)
RVR2-1CESLDPCCAP (18" x 24" Size)

SCHOOL ZONE

SPEED LIMIT 20

SPEED LIMIT 35

Model:
VATCSR2-1,20,35/SD/L/DL/PT

Uniplan Part Number:
RVR2-1CFSLDPCCBP (24" x 30" Size)
RVR2-1CFSLDPCCAP (18" x 24" Size)

SPEED LIMIT 30

SPEED LIMIT 35

Model:
VATCSR2-1,30,35/SD/L/DL/PT

Uniplan Part Number:
RVR2-1EFSLDPCCBP (24" x 30" Size)
RVR2-1EFSLDPCCAP (18" x 24" Size)

SPEED LIMIT 20

SPEED LIMIT 40

Model:
VATCSR2-1,20,40/SD/L/DL/PT

Uniplan Part Number:
RVR2-1CGSLDPCCBP (24" x 30" Size)
RVR2-1CGSLDPCCAP (18" x 24" Size)

SPEED LIMIT 30

SPEED LIMIT 40

Model:
VATCSR2-1,30,40/SD/L/DL/PT

Uniplan Part Number:
RVR2-1EGSLDPCCBP (24" x 30" Size)
RVR2-1EGSLDPCCAP (18" x 24" Size)

173 Main Street, Bath
Ontario
K0H 1G0
Phone: (613) 352-3458
Fax: (613) 352-6845

E-mail: enquiry@dormanvaritext.com
Website: www.dormanvaritext.com